



NEWS LETTER

JULY 2022

Number 159

RICHMOND
ART SOCIETY

RAS Chairman's Report

At the AGM of the society in April I was elected as the new chair. My predecessor, Pete Swann, had decided to stand down after six years in the role. It was a long stint during which Pete did an amazing job. Many good things were started during his tenure including the Midsummer Party, a great opportunity to meet fellow members, and the Plein Air painting group, a notable gap in our previous activities.

These initiatives continue on my watch. We are grateful to our president, John Iddon, for hosting this year's party and Hugh Dalzell continues masterminding our plein air group. There are a number of new things coming up too. Starting in September our popular lecture programme moves from the American University to the Duke Street Church in the heart of Richmond, which I hope will prove a more convenient location for a lot of you, though a number of lectures in the forthcoming programme will still be on Zoom (see the website for details) Our exhibition programme continues at Landmark Arts Centre in Teddington though one aim I have is that we hold some sort of exhibition in Richmond itself, after all we are the Richmond Art Society. We are currently researching



*Jim Woodman
welcoming members
at the Summer Party*

opportunities so watch this space. One of the best things I inherited from Pete was a fully staffed and

effective committee, two of its members are worthy of special mention. Jude Wild remains on the committee but is standing down after eleven years from arranging and running the lecture programme and Nilda Ginn is standing down in August from her role as Treasurer of the society, again a role she has held for eleven years. This is incredible dedication on both of their parts and we are very grateful to both of them.

It is a great honour to be the chairman of the society and I look forward to serving you all over the year ahead.

New roles.

Emma Tweedie will be taking over the role of Membership Coordinator from John Brigden. Thanks to John for his efforts over the last few years.

Our new lecture organisers are Sally Johnson and Jill Butt.

Jim has a solo show at Gallery An Talla Dearg Isle Ornsay, Skye running from the 22nd July to 17th August, his fourteenth year..

Caroline Sayer

This year's Summer Exhibition was held at the Landmark Arts Centre from Friday 24 to Sunday 26 June, with a Private View held on the Friday evening. We had 45 artists exhibiting at the show, and 157 works on display. We were delighted to have some work to exhibit from Richmond's twin town of Fontainebleau and Evelyne Wenzel,



Paul Douglas, Evelyne Wenzel, Katia Boitsova Hosek,

President of ARCIF Fontainebleau, was kind enough to open the exhibition on Friday evening. She used the occasion to promote the close ties Richmond still has with Fontainebleau. Katia Boitsova Hosek, representing the Fontainebleau artists, also travelled over with her paintings to be at the exhibition, and it was lovely to see her and all her colleagues' work.

The exhibition was advertised via a 23,000 leaflet distribution throughout Richmond; a flyer insert into the Arts Richmond newsletter; advertisements in the Teddington and Twickenham free magazines and publicity on the magazine's cover and inside; online publicity to all relevant online publications; posters around Teddington and banners

outside the Landmark. 547 people visited the exhibition over the weekend, which meant it was busy throughout the show. 24 works and 240 cards were sold - which Nilda (our treasurer) thinks must be a record for card sales! Total sales were just under £3,000 - not as good as last summer, but pretty good all things considered.

The winner of the favourite picture vote Carole Bennet's Tan-y-Bryn, Waun Fawr, Snowdonia

We raised £86.20 from donations for drinks over the weekend, which has been donated to the British Red Cross (Ukrainian Crisis Appeal)



We were very short staffed hanging the exhibition this time There were only 4 of us hanging nearly 160 works and we were there until late in the afternoon.

Jim says there has now been a good response to his request for volunteers.

The Winter Exhibition 2022

At the Landmark: set up Thursday 1st December, open Friday 2nd and Saturday 3rd December.

The idea of twinning with Richmond's twin town of Fontainebleau was first discussed back in 2009 when RAS committee member Paul Douglas had the idea of forging a link.

With the help of the Richmond in Europe Association, Paul together with RAS's then Chairman Angela Kilenyi were introduced to Fontainebleau's enthusiastic president of ARCIF, Madam Evelyn Wenzel who also organises and oversees all the twinings for the town. A selection artists from Fontainebleau were shown at the Landmark in late June, 2012, which proved a great success in terms of prestige if not actual sales.

Artists from the RAS were invited to take part in a very prestigious twinning exhibition in Fontainebleau's historic Salon d' Honneur in September 2012. With these two events, RAS's relationship with Fontainebleau was cemented.

The next twinned exhibition was again held in Fontainebleau and was in May, 2015 as part of a celebrations marking the 55th anniversary of Fontainebleau's twinning with Konstanz.

In 2017, the 40th anniversary of Richmond's twinning with Fontainebleau, we had another exhibition in June in the Landmark Evelyne Wenzel was guest of honour and opened the exhibition. To celebrate the 60th anniversary of all the twinings with Richmond, Fontainebleau and Konstanz another exhibition was planned for the Landmark in June of 2020 which was also the the time of all the official reaffirmation events were to take place across Richmond. However

Covid halted everything and now the main reaffirmation events have been rescheduled for June of 2025 which will then be the 65th anniversary. It was felt in both Fontainebleau and RAS that we didn't have to wait until 2025 to continue these twinned exhibitions, Our most recent RAS Landmark exhibition was on Friday 24 to Sunday 26 June. This was an important milestone as it marked 10 years of twinning. We had two guests of honour from Fontainebleau, Evelyne Wenzel and Katia Hosek. Despite the current BREXIT restrictions they both managed to bring 9 works from France of which 4 were Katias

Paul (who stood in for our new Chairman Jim Woodman who was unable to attend) introduced Evelyne and Katia who made speeches stressing the importance now more than ever of twinning and the priceless friendships this link fosters. Paul also introduced the enthusiastic REA Chairman Alan Mockford who also spoke. This current twinned exhibition was the culmination of a very dynamic year for art in Fontainebleau, with a photographic exhibition called Phemina which took place in Fontainebleau in March in which Paul attended and had works on show with other Richmond photographers. In May ARCIF had its 60th Anniversary with lots of prestigious events including another twinned art exhibition in which Paul again attended and had works on show plus other Richmond artists.

To summarise, 2022 has proved a wonderful year in RAS's relationship with our French friends with many more such events to follow!

SUMMER PARTY

The RAS Summer Party, first introduced by Peter Swann, happened again this year on a glorious warm summer evening.

It was held on Friday, 8 July in the garden of the home of our President, John Iddon at 25 Park Road, Richmond. It was very convivial affair and a good chance to meet fellow members.



John Iddon

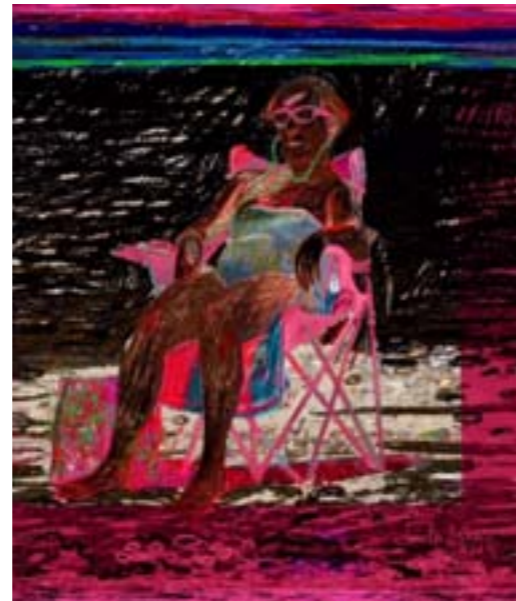


the summer party in the garden

MEMBERS NEWS

Jan Johnson

I have a digital drawing 'Burnt Out' at this year's Royal Academy Summer Exhibition - 21 June-21 Aug. This year's theme is 'climate' and the image depicts a woman on a beach who is metaphorically and physically burnt out, with the recent threat of nuclear war in my mind.



'Burnt Out' by Jan Johnson

Also, I'm teaching watercolour painting at ETNA east Twickenham community centre on Tuesday afternoons, and I have a few places left. From 4th October janleejohnson@me.com for details.

QUERY?

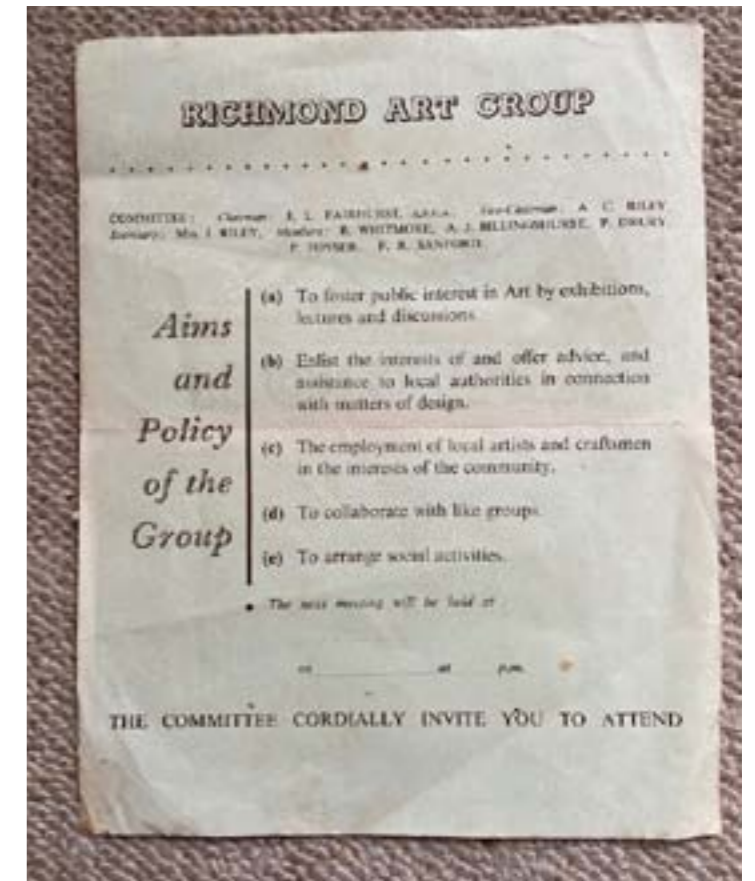
Francesca Nurse visited our exhibition and sent me the following. Was this the beginning of the Richmond Art Society?

Francesca says that her parents were involved in the beginnings of The Richmond Art Group so you can see here that the meetings were held at the various committee members' houses. She remembers them at her house.

Her parents were Joan and Cecil Riley, her father being Vice-Chairman and her mother being Secretary of the group.

The picture on the front of the leaflet is a lino cut by her father. Please show it to anyone who might be interested in the early history of the group.

Unfortunately this one has not been filled in with the date which would have been good to know. However Francesca thinks about 1952



MEMBERS NEWS

NEW TREASURER



Sue Forster

Nilda Ginn the Treasurer of The Society is stepping down after 11 years. Sue Forster will take over from her on 1 August 2022,

Sue Forster lives in Richmond and runs a research and education organisation, based in Central London. Alongside being with her family, her main forms of relaxation are painting landscapes using acrylics and creating decorative items by fusing glass. She has been

a member of the RAS for quite a few years and is looking forward to getting more involved in the Society in her role as Treasurer.



Sue Ribbans

If you are visiting London and heading along the river from Waterloo to Tate Britain make your way onto Gabriel's Wharf and go into the Southbank Printmakers Gallery.

It is an artists co-operative with 40 active printmakers

Sue Ribbans is a member and you can see her work on the walls and in the browsers.

Emma Tweedie

Emma Tweedie will be showing a painting called 'Thurf Cuts' after being selected for the Townhouse Spitalfields Annual Art Exhibition. This, their latest annual presentation, will feature a group of contemporary artworks all carefully curated by the team there.



'Thurf Cuts' by Emma Tweedie

The show will be open between 13 July until 4 Sept. The Townhouse is a fabulous 18th Century building situated opposite the Hawksmoor's church, and there's an on site cafe serving a host of yummy treats.
Address: 5 Fournier Street, London, EC1 6QE
Opening hours:
Tues to Sat 11am – 6pm.
Sun 11.30am – 5.30pm

Emma currently has a number of artworks on display at The Art Buyer Gallery in Thames Ditton as part of their contemporary summer show. Curated by founder Helen Armon-Jones, the gallery is open between Wednesdays and Saturdays and can be found at 16A High Street, Thames Ditton, KT7 0RY. The summer show runs from July-August.

Summer Show Catalogue Link:

https://indd.adobe.com/view/defaaee8-8459-4672-bbc4-6fc47c3cb7af?utm_source=Summer+Show+Website+Header+Link

Emma is also pleased to announce that she will be newly represented by the Brian Sinfield Gallery in Oxford, kicking off with a selection of works as part of their annual autumn show. The Brian Sinfield Gallery has built up a reputation for being one of the most prestigious galleries outside London for contemporary painting and one of the longest established galleries in the Cotswolds.

Emma joins a roster of impressive artist names including Annie Rouse, Elsa Taylor, Paul Robinson, John Maxwell-Steele, Ann Oram (RSW), and Fred Cumming (RA).

The show will run from the 1 - 31 August.

Address:
The Brian Sinfield Gallery
127 The Hill
Burford, Oxfordshire

Hugh Dalzell

Hugh Dalzell

On Tuesday 26 July at Tide Tables, Richmond Bridge, the flourishing Plein Air Group will clock up its twentieth consecutive meeting, irrespective of the weather or the availability of coffee. Two of us enjoyed the chilly inaugural session, at Tide Tables on 16 March and we now number over twenty and growing, sharing the pleasures (and pains) of outdoor sketching and painting. Interesting discoveries have been made about the effects of rain and hailstones on oil paint although the brightest members have found ways



Linda White Riverside

We meet at 10.30 on Tuesday mornings at a different venue each week. Boatyards, bridges, greens, panoramic and riverside viewpoints, parks and stately homes scattered

to keep work safe and dry and will share their know-how. We break for August and plan to resume for some more meetings in the Autumn.


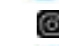

from Bushy Park to Brentford, Twickenham to Kew. The programme is posted on WhatsApp as is much of the work done. Meetings are "at your own risk", free, untutored and informal. Most of the group are RSA members but RSA membership is not a requirement and we are delighted to be joined by anyone wanting to socialise and get stuck in.

If you are not already in the WhatsApp group and would like to join it, please send your mobile number by Email to: hugh@dalzell.info and then all you need do is just turn up – or not – your call.



Gillie Spargo

Members who know friends or associates who might be interested in joining the Society as an exhibiting or non-exhibiting member should ask them to go onto the RAS website for information.

 @Richmond_ArtSoc
 @richmond_artsociety
 RichmondArtSociety/